

OPERATING MODE

First set up lock up in most appropriate MODE for application.

Lock can be set in either **A) PUBLIC MODE** or **B) PRIVATE MODE**.

A) PUBLIC MODE

Note: This is the default mode and is already preset in a new lock.

This is the most common mode and used for short term multi occupancy applications e.g. gym lockers.

How this works:

User enters their own personal four digit code. This locks the lock. The same code is entered to open the lock once and will then be erased. The lock is now available for a new code to be entered by a new user.

B) PRIVATE MODE

This mode is typically used for personal lockers 'owned' by an individual.

In this mode the user must enter the same code each time to open the lock.

To switch between MODE A) or B) see special Master Code commands.

The KIC1000 has four code levels available:

- 1) MASTER CODE
- 2) SUB-MASTER CODE
- 3) USER CODE
- 4) SERVICE CODE

The KIC1000 is supplied with two factory set codes:

MODE A+B:
MASTER CODE 11335577

MODE B Only:
USER CODE 2244

- When installed, **immediately** change the Master Code and if using **mode B**, User Code also.
- Master Codes and Sub-Master Codes are 8 digits long.
- User Codes are 4 digits long.
- Service Codes are 6 digits long.
- The lock 'open' time is set at 4 seconds.

OPERATING INSTRUCTIONS

Note: The KIC1000 has a 10 button keypad and a # button. The # button is hidden beneath the handle when in the locked position.

The four code levels operate as follows:

1) MASTER CODE

The Master Code can:

- Open the lock
- Change the Master Code
- Set / Change / Delete the Sub-Master and User Code
- Select between Private and Public Functions
- Activate / deactivate Service Code

2) SUB-MASTER CODE

The Sub-Master Code can:

- Open the lock
- Change the Sub-Master
- Set / Change / Delete / the User Code

3) USER CODE

The User Code can:




- Open the lock
- Change the User Code

4) SERVICE CODE

The Service Code can:

- Open the lock

Note: A code cannot be programmed into more than one level.

-  **Blue LED = Code Accepted**
-  **Red LED = Code Rejected**
-  **Red + Blue LED = Command not valid in MODE A**

LOST CODE PROCEDURE

Note: The procedure requires the door to be open.

- Remove the rear thru-bolt and swing the lock over the edge of the door to reveal the battery compartment.
- Remove one battery.
- Press and hold the 1 button, replace the battery, the Blue LED will flash twice, release the 1 button. Within three seconds press the 1 button three times. The Blue LED will flash twice and the lock will have reverted to the factory Master Code 11335577 and all other stored settings will be erased.

PENALTY TIME

Entering three incorrect codes will cause the lock to shutdown for 10 seconds.

BATTERY POWER

The KIC1000 should provide well in excess of 20,000 openings, of 4 seconds each, from 2 x AAA 1.5v cells.

LOW BATTERY

When the battery power is low the Red LED will flash 3 times before the Blue LED lights, accepting the code. Install new batteries as soon as this happens. The lock will operate for 100 times with low battery.

BATTERY FAILURE OVERRIDE

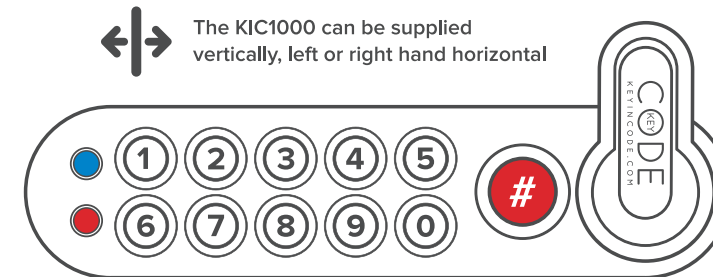
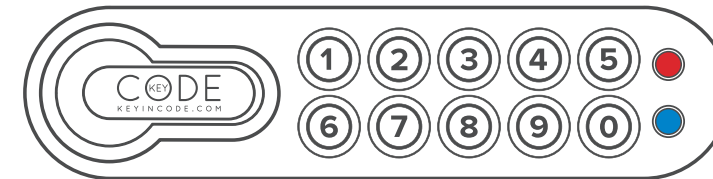
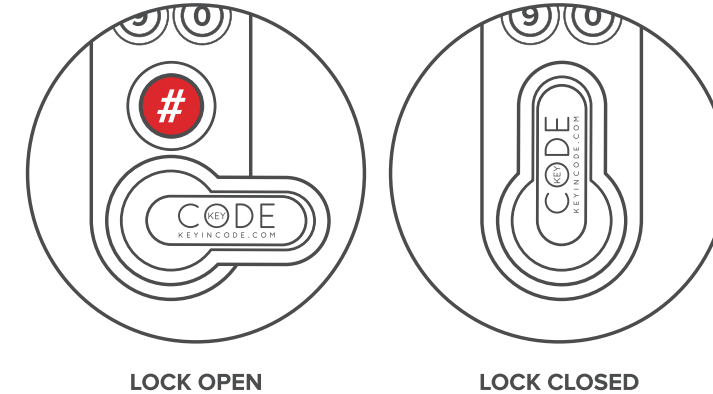
The KIC1000 has been designed so an external 9V battery can be placed against the contact points surrounding the Blue and Red LED's so the lock can be opened to replace the batteries should they fail.

The procedure is as follows:

- Place the contact points of the 9V battery against the contact points surrounding the Blue and Red LED's.
- The positive + 9V terminal against the Red LED contact point and the negative – 9V terminal against the Blue LED.
- Enter the Master Code.
- The motor will withdraw the locking pin allowing the lock to be opened.
- Install new batteries by removing the upper thru-bolt and swinging the lock down over the edge of the door.
- Reinstall the lock.

PROGRAMMING

To program – the lock must be in the open position with the # button visible. Every program command must start by pressing the # button, followed by either the Master Code, Sub-Master Code or User Code.



KIC1000

KEY CODE
KEYINCODE.COM

KEYINCODE LLC

55 Concord St Unit 5C
North Reading, MA 01864, USA

Tel: 978-207-0269

Fax: 978-207-1867

Email: sales@keyincode.com

Web: keyincode.com

MASTER CODE COMMANDS

CHANGE THE MASTER CODE (MODE A + B)

#Master Code ● 01 ● New Master Code ● New Master Code ● ●

Example: #11335577 ● 01 ● 01010101 ● 01010101 ● ●

Result: Master Code has been changed to 01010101.

SET OR CHANGE THE USER CODE (MODE B only)

#Master Code ● 02 ● User Code ● ●

Example: #11335577 ● 02 ● 2222 ● ●

Result: New User Code 2222 now active.

SET OR CHANGE THE SUB-MASTER CODE (MODE A + B)

#Master Code ● 04 ● Sub-Master Code ● Sub-Master Code ● ●

Example: #11335577 ● 04 ● 03030303 ● 03030303 ● ●

Result: Sub-Master Code 03030303 now active.

DELETE THE SUB-MASTER CODE (MODE A + B)

#Master Code ● 05 ● 05 ● ●

Example: #11335577 ● 05 ● 05 ● ●

Result: Sub-Master Code deleted.

DELETE USER CODE (MODE B)

#Master Code ● 03 ● ●

Example: #11335577 ● 03 ● ●

Result: User Code deleted.

BATTERY LEVEL CHECK

#Master Code ● 09 ● ●

Example: #11335577 ● 09 ● ●

Result: Both ● Red LED & ● Blue LED will flash to indicate current battery status.

SUB-MASTER COMMANDS

CHANGE THE SUB-MASTER CODE

#Sub-Master Code ● 06 ● New Sub-Master Code ● ●

New Sub-Master Code

Example: #03030303 ● 06 ● 04040404 ● 04040404 ● ●

Result: Sub-Master Code has been changed to 04040404.

SET OR CHANGE THE USER CODE

#Sub-Master Code ● 07 ● User Code ● ●

Example: #03030303 ● 07 ● 4444 ● ●

Result: New User Code 4444 now active.

DELETE USER CODE

#Sub-Master Code ● 08 ● ●

Example: #03030303 ● 08 ● ●

Result: User Code deleted.

Above all MODE B only

USER COMMAND

CHANGE THE USER CODE

#User Code ● New User Code ● New User Code ● ●

Example: #4444 ● 5555 ● 5555 ● ●

Result: User Code now 5555.

SPECIAL MASTER CODE COMMANDS

SET A) PUBLIC MODE (DEFAULT)

#Master Code ● 24 ● ●

Example: #11335577 ● 24 ● ●

Result: The lock will now stay open until the next user enters their own personal code to lock the lock as follows:

Step 1 – User enters 4 digit code ● KIC1000 is now locked with handle in closed position.

Step 2 – User enters same 4 digit code ● ● and lock opens. Lock remains open until next new 4 digit code entered.

SET B) PRIVATE MODE

#Master Code ● 26 ● ●

Example: #11335577 ● 26 ● ●

Result: The lock reverts to Private Mode and the default Private Mode user code 2244 until changed to a new User Code. In Private Mode the **SAME** user code is used to open and close the lock.

SET SERVICE CODE

#Master Code ● 99 ● Service Code ● Service Code ● ●

Example: #11335577 ● 99 ● 666666 ● 666666 ● ●

Result: The lock is automatically set into **A) PUBLIC MODE** function.

When the Service Code is set it allows the Service Code to open and then relock the lock **WITHOUT** the entered user code being erased.

Note 1: This Service Code is useful when items stored in a locker need to be serviced e.g. ski lockers.

Note 2: If a Master Code is used to open a lock in this mode the User Code will be automatically erased.

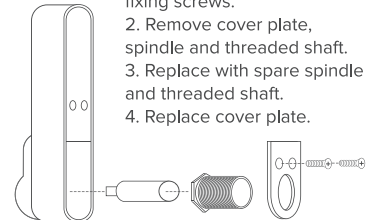
INSTALLATION INSTRUCTIONS

Please read carefully:

- Before installing the lock, load the batteries and familiarise yourself with the operation and programming.
- The lock is supplied in **Mode A Public Mode**. Handle will freely turn until selected 4 digit code is entered. Using the same 4 digit code will open the lock as will the default **Master Code 11335577**.

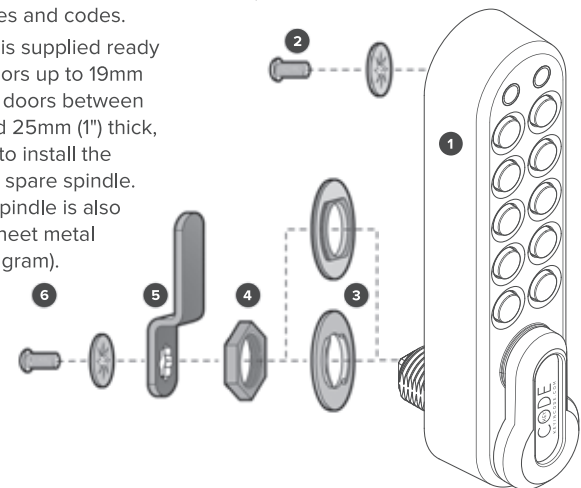
- Please see programming & operating instructions to set required modes and codes.
- Your KIC1000 is supplied ready to install to doors up to 19mm (3/4") thick. For doors between 19mm (3/4") and 25mm (1") thick, you will need to install the 28.5mm (1 1/8") spare spindle. A 12mm (1/2") spindle is also included for sheet metal doors (see diagram).

1. Remove the lower 2 fixing screws.
2. Remove cover plate, spindle and threaded shaft.
3. Replace with spare spindle and threaded shaft.
4. Replace cover plate.



- | | |
|-----------------------|-----------------|
| 1 KIC1000 | 4 Locking nut |
| 2 Upper thru-bolt x 2 | 5 Cams x 2 |
| 3 Packer pieces x 3 | 6 Cam thru-bolt |

Batteries – 2 x 1.5V AAA
Template x 1



INSTALLATION GUIDE

A) REPLACE EXISTING CAM LOCK WITH THE KIC1000

STEP 1 Remove existing cam lock.

STEP 2 Place the 16mm (5/8") template hole over the hole left by the cam lock and mark the upper fixing hole.

STEP 3 Drill 6mm (1/4") fixing hole.

STEP 4 Install the KIC1000 to the door by passing the spindle through the 16mm (5/8") hole.

STEP 5 If required, from the inside of the door, pass either of the packing pieces over the spindle to centralise the lock.

STEP 6 Now secure the lock by threading the large nut onto the spindle.

STEP 7 Install one of the upper thru-bolts to suit your door thickness.

STEP 8 Tighten the lower fixing nut and upper bolt.

STEP 9 Select the cam which suits your door and frame and attach it to the square shaft at the end of the spindle.

STEP 10 Now check the operation of the lock using any four digit code to lock and unlock i.e. 0000 to lock, then 0000 to open.

Note: Lock is supplied in **default Mode A (default mode)**

STEP 11 If the lock is functioning correctly, program the lock using instructions attached.

B) NEW INSTALLATION

STEP 1 Place template on door and mark upper 6mm (1/4") hole and lower 16mm (5/8") hole. **NOTE:** Before drilling fixing holes, please ensure the position of the KIC1000 when installed will allow enough clearance for selected cam to work.

STEP 2 Drill both fixing holes.

STEP 3 Continue installation from step 4 to 11, above.